



REOPENING LONOKE SCHOOLS 20-21

Parents and Students,

We are excited to welcome you back to school on August 24, 2020 and know you are anxious to know what lies ahead for this next school year. We have sent out surveys, held meetings with district administrators, asked for input from our community re-entry team, to build a re-entry plan that, we believe, will meet the needs of all LPSD students and parents. Most importantly, our plan is aligned with directives and guidance from our Governor, the Arkansas Department of Education, and the Arkansas Department of Health. Ultimately, we will offer two options for you as you make plans to return to school.

Option #1: Face to face on campus with blended learning using Chromebook technology; and/or Option #2: Face to face off campus with blended learning using Chromebook technology.

We anticipate that our students will need flexibility from time to time during the pandemic; therefore, we are providing Option #1 or Option #2, or a combination of both. To accommodate for these potential fluid changes, we are providing hotspots, hotspot hubs, and Chromebooks to students to ensure remote learning. Please contact your school about hotspots if you have no internet access. You will need to sign an acceptance user agreement to get access to hotspots.

The Lonoke Public School District has made health and safety a priority. Personal Protective Equipment (PPE) has been ordered for students and staff to control transmission of the virus and ensure containment if positive cases occur. We appreciate your patience and assistance.

Thanks for all your flexibility during this time. We are all learning together how to make this a positive experience for all.

Dr. John Tackett & Amanda Rather



REOPENING LONOKE SCHOOLS 20-21

General Information

Please consider the information and guidance below as you plan for the upcoming school year. The information provided here is an overview only and is not intended to be an exhaustive list of what you need to know for school start-up in 2020-2021. Each school will provide more details to assist you in planning:

Response to the Pandemic

We have a great healthcare team in the Lonoke Public School District, including our school nurses as well as our Baptist Health Family Medicine Residency Program physicians. They will be housed this year in the portable building behind the LHS safe room until the new Business Academy is built. Our plan reflects the most current information available to us as well as guidance we have received from our healthcare team. Contact your school administrators if you have concerns or questions.

Differences for 2020-2021

Even though we desire for those students that return to campus this fall to have a sense of normalcy, there will be some changes due to recommendations from Arkansas Department of Health and may change as situations arise. Here is what you can expect:



It's recommended before coming to school, parents/guardians check their child's temperature. If they have 100.4 degrees or higher, the child needs to stay home. Teachers and staff will also screen and not come to school if they are experiencing symptoms. Once a child arrives at a school campus, their temperature will be checked again. If they have over 100.4 degrees, they will be sent to the nurse and a parent/guardian will be contacted for pickup.

Administrators, teachers, and staff will be wearing face masks. Common areas such as the school office will be open to visitors but access past the office will be limited.



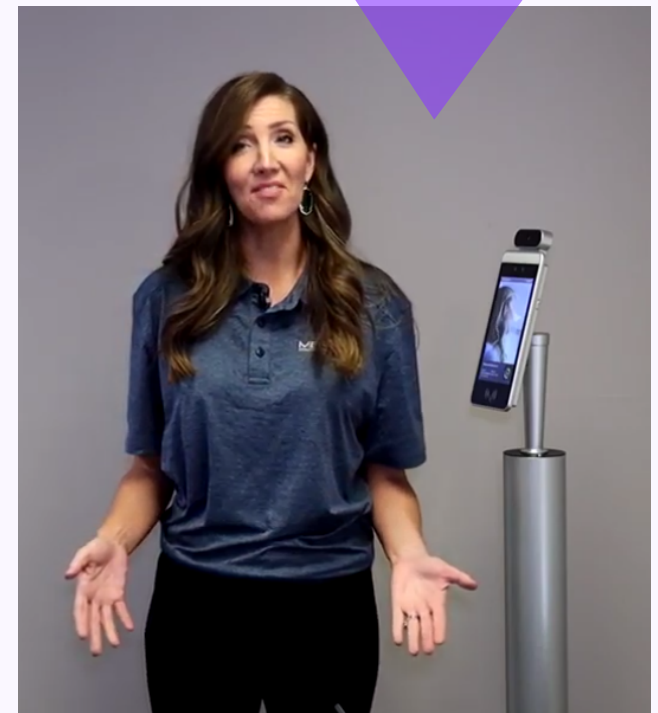


REOPENING LONOKE SCHOOLS 20-21

Procedures

All students, parents, and visitors must pass through a digital temperature screener before moving through any facility. We will have two digital screening stands for each school and one in other locations (bus shop, special education office, central office, Carver campus). You may only enter buildings at designated entry points.

All students are expected to wear face coverings when social distancing is not possible, practice good hand hygiene, and practice social distancing, when feasible. Staff members will teach the importance of wearing masks, good hand hygiene, and social distancing, and exercise flexibility if/when a student is having trouble breathing with and/or keeping on a mask. Classrooms will be arranged to maximize social distancing.



Hand sanitizer should be used frequently. Students will be given the opportunity to wash hands frequently throughout the day.

If a student presents symptoms, he/she should put on a mask if not already masked and go directly to the school nurse for further evaluation. If a student tests positive for Covid-19, school health officials will follow guidance from the CDC and ADH, including contact tracing to identify any others who may have been exposed to the virus.

learning will continue



Schools or areas in schools may close at any point for sanitizing and deep cleaning if there are concerns. Teaching and learning will continue. In all circumstances relating to health concerns, Leah Robinson (head nurse), in consultation with our School-Based Health Clinic team, and the Arkansas Department of Health will guide district decisions related to COVID-19.

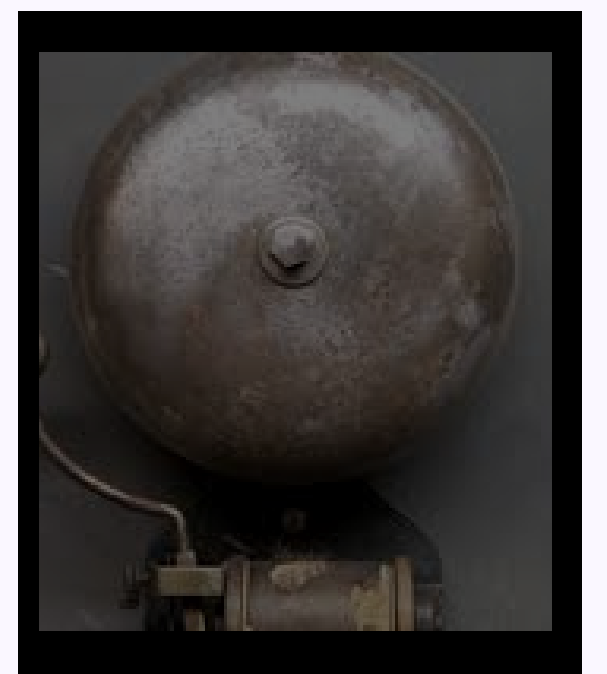


REOPENING LONOKE SCHOOLS 20-21

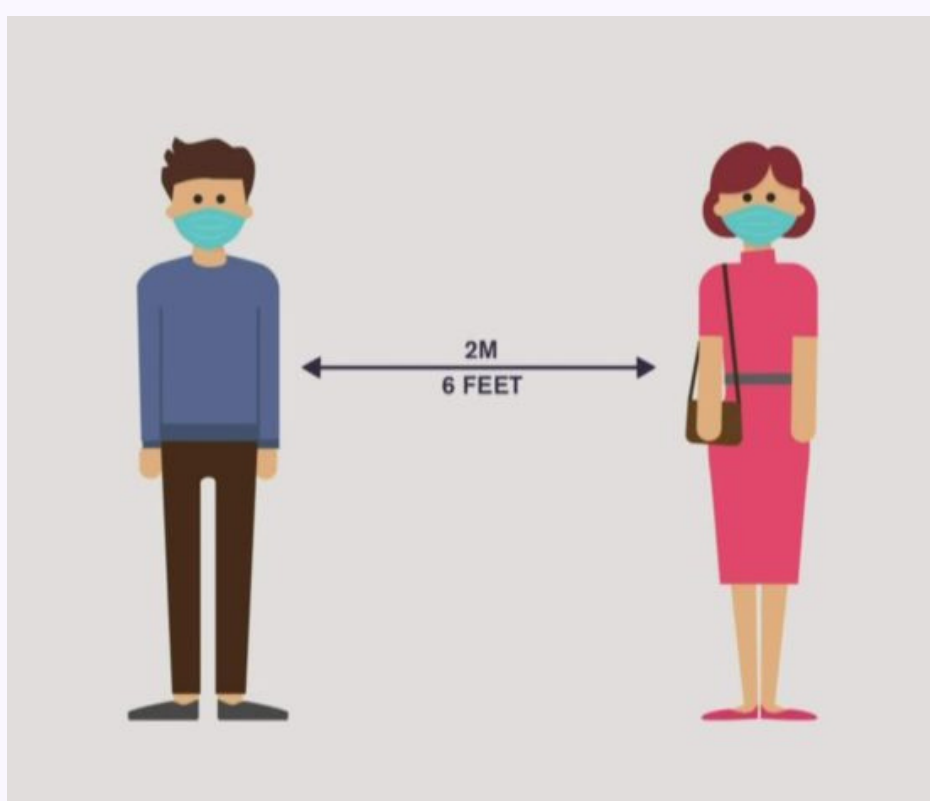
Bell Schedules

Starting and dismissal times will be very close to the same as this past school year.

Entry and dismissal in each building will be coordinated to ensure safe entering and exiting of the building. Digital temperature scanners will be used each day, when students and staff enter buildings. Time frames may be established to prevent large student groups in close proximity.



Class transitions will be coordinated to eliminate unnecessary student contact. When possible, students may be scheduled in the same classrooms to ensure less contact. As always, building administrators will ensure consistent time frames for teaching and learning. To maximize social distancing, when possible, time frames may be adjusted in large group settings (i.e. lunch).



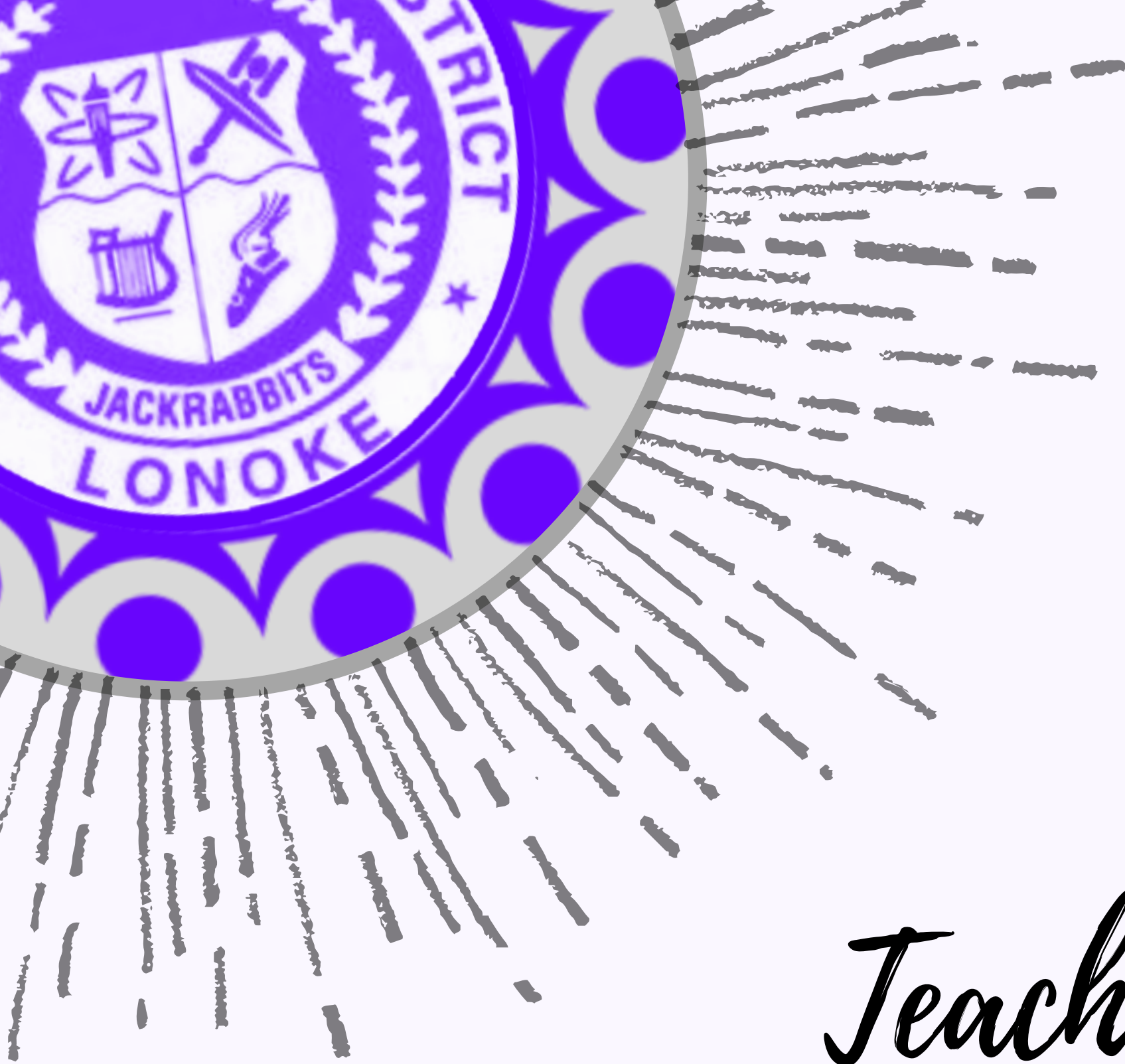
Options for Learning

Parents and guardians have been given two options for their child(ren) for the 2020-2021 school year. Options are as follows:

Option 1 allows the child to return to campus with safety protocols in place that align with the Arkansas Department of Health.

Option 2 allows the child to learn off campus. If internet access is a concern, the school district has options to assist families. Please contact your school office for more information.

Once a parent/guardian has chosen Option 1 or Option 2, the student must remain in that setting until the end of the nine weeks grading period. If the parent/guardian removes the student to off campus learning, the child must complete the nine weeks virtually.



REOPENING LONOKE SCHOOLS 20-21

Teaching & Learning

K-8

K-8 students, both on- and off-campus, will receive instruction through Google Classroom. Teachers will utilize the platform to provide blended learning opportunities, such as launching videos of live lessons, creating and administering assessments, and providing opportunities for practice and feedback from the teacher. Face-to-face learning will occur on-campus and off-campus.

The Back-To-School Playbook is a resource guide that addresses essential learning at each grade level. The District has identified the standards that were not addressed from March to May, and will work to build a guide with linked lessons and assessments that will follow students to the next grade level. This will be a great tool for our staff to know exactly what the students may have missed and where to pick up.

6-12

Students on- and off-campus in grades 6-12 that are not in the School of Innovation/Envision will receive instruction through Google Classroom. Teachers will utilize the platform to provide blended learning opportunities, such as launching videos of live lessons, creating and administering assessments, and providing opportunities for practice and timely feedback from the teacher. Face-to-face learning will occur on-campus and off-campus.

Each student in Grades 6-12, who is in LMS's School of Innovation and LHS's ENVISION will have access to Onfire, our digital learning management system. This will be the learning platform upon which all curricula and essential learning in those grades is/will be built to support blended learning on/off campus. Teachers have flexibility to manipulate the curriculum within the platform to personalize units and lessons to meet students' needs.



REOPENING LENOIRE SCHOOLS 20-21

On- & Off-Campus Learning

The District has been working with internet providers to acquire hotspot hubs, hotspots, and Broadband for students in remote areas in our District. We will continue to work on this critical issue to ensure that teachers can connect with students in real time.

Blended learning is a comprehensive approach to teaching and learning that provides flexibility for learners in terms of pace, pathway for learning, place (various locations in the building, on and off campus), and time. This approach to learning is not new and has already been used in district schools. Physical spaces for learning will look different. Classroom areas need to be more open with desks and tables spread out. AMI, as we have known it, will be replaced by Blended Learning. We believe you will feel confident that your children will receive exceptional teaching and learning even though your children may be off-campus at times.



Depending on class loads and other scheduling dynamics, some teachers may do more virtual face-to-face with those students who either can't or who choose not to return to on-campus instruction. Remember, even though we are offering off-campus teaching and learning when schools are open, on-campus teaching and learning is more beneficial for learners because teachers are able to better differentiate instruction and activities to meet the learning styles of all students.

In coordination with other districts and the ADE, we have applied for several waivers that will afford us more needed flexibility. Interestingly enough, we have applied for some of the same waivers through our Schools of Innovation applications. Schools and concepts of learning have been changing and will continue to change, and we will change with them to better prepare your students for great success.



REOPENING LENOIRE SCHOOLS 20-21

Logistics of Off-Campus Learning

If schools have to close for any number of days, teaching and learning will continue just as it did this past year during AMI days. The difference this time will be that all students will have Chromebooks and most if not all students will have internet access, eliminating the need for paper. Please contact your school administration about hotspots.

At the beginning of the school year, some parents may opt to have their children participate in off-campus learning. Each school will have its own personalized approach to provide learning opportunities for students, which may include:

Designated staff members who work exclusively with off-campus students.

Flexible teacher schedules to include on-campus face-to-face and off-campus face-to-face, depending on class loads.

Placement of students in Schools of Innovation, which are designed to provide more flexibility.

Internet Access: A District Commitment

Mobile Hotspots - This would be a district provided device that would work in conjunction with your cell service. If you have cell service, you can gain internet accessing using this method. The District has currently committed to purchasing the hotspot, and paying the first 3 months of service.

Aristotle Public Access Areas - Aristotle has committed to placing 5 mobile internet access areas throughout our district in various locations. These internet access points do not cover large areas, but would grant students access in these identified areas.



REOPENING LONOKE SCHOOLS 20-21

Frequently Asked Questions

Updated July 21, 2020

When will school start? School will start on **August 24, 2020**.

If my family travels in August, can my child return to school immediately or must he/she quarantine for 14 days first? The Arkansas Department of Health asks travelers to ~~consider self-quarantine after domestic travel in high risk areas or following international travel.~~ **Self-quarantining guidelines have been removed.**

How different will school look when students return? It is the goal of the Lonoke Public School District to have school in a traditional manner. There will be, however, some new procedures and processes that reflect state directives and best practices to ensure that all students and staff have a safe and successful school experience. Classrooms and large spaces will be arranged to provide more space between students, while providing opportunities for student interaction, to the extent possible.

Will bell schedules change? School start and end times will be the same. Adjustments within those time frames, however, may be made to accommodate any needed safety measures, such as social distancing.

Do students have learning options? On-campus and off-campus instruction will be available to students. Both options will have blended learning components. While off-campus learning is a viable option for learning, on-site learning is the most effective way to meet the diverse learning styles of all students.

What is Blended Learning? Blended learning is education in which instruction and content are delivered through supervised instruction in a classroom setting as well as online delivery of instruction with some element of student control over time, path, pace, and place.



REOPENING LONOKE SCHOOLS 20-21

Frequently Asked Questions

Updated July 21, 2020

How will students learn off-campus? In the event schools are closed to on-campus instruction, teachers will connect with students and provide lessons and support through Chromebooks using the following Learning Management Systems:

- Google Classroom (K-12)
- Google Classroom and Onfire for LMS School of Innovation
- Google Classroom and Onfire for LHS ENVISION Students

The District has sent surveys home to determine the need for internet connectivity and will provide, to the extent possible, hotspot hubs, hotspots, and the equipment needed for broadband connectivity to households where there is no connectivity by cell phone or computer.

Are face coverings required? Guidance from the Arkansas Department of Health is clear about the need to wear face covering, practice good hand hygiene, and practice social distancing to slow the spread of the virus. That guidance can be found at <https://bit.ly/31avMlk>.

All staff and students are expected to wear face coverings, practice good hand hygiene, and practice social distancing, when feasible. Staff members will teach the importance of wearing masks, good hand hygiene, and social distancing, and exercise flexibility if/when a student is having difficulty with a mask. Classrooms will be arranged to maximize social distancing. When possible and/or practical, teachers will periodically build in opportunities for students to enjoy outside air.

All students riding buses are expected to wear face masks while using district transportation.



REOPENING LENOIR SCHOOLS 20-21

Frequently Asked Questions

Updated July 21, 2020

What other measures have been taken to protect students and staff from infection? Each building in the District will have a digital temperature screener that all students, staff, and visitors must pass through in order to ensure schools are fever-free. Hand sanitizing, social distancing, and disinfecting will be emphasized to ensure containment of illnesses. The district has purchased personal protective equipment, masks, etc, for student and staff use.

How will food service change? Cafeterias will operate at 50% - 66% capacity (unless changed by ADH) as feasible to account for physical distancing during meal times. Lunch times may be staggered, to the extent possible, to ensure that students are safely distanced. Proper sanitizing will occur after each meal. Students will not self-serve and will be asked to avoid sharing food. Students will wear face masks until they are seated. Students will wear face masks after finishing their meal time. If lunch shifts cannot be staggered to accommodate the entire population using the cafeteria, then breakfast and lunch in the classroom or another location may be an option. The groups will rotate on a schedule, so all students can use the cafeteria at certain days or times. Students who are learning off-campus will have access to box lunches similar to those sent home during our school closure. It is important for families to complete free and reduced lunch applications. Boxed lunches will not be free unless a student's family qualifies for free lunch or reduced cost unless the family qualifies for reduced lunch.

What about water fountains? Current guidance recommends avoiding use of water fountains. Parents are encouraged to send a water bottle with their students clearly labeled with the student's name.



REOPENING LONOKE SCHOOLS 20-21

Frequently Asked Questions

Updated July 27, 2020

Will bus routes or routines change? Buses will maintain traditional routes. LPSSD has no plans to change bus schedules or bus stops. **All students will wear face masks on the bus. Bus drivers will wear face masks as well.** ADH requests that parents check their child's temperature before going to the bus stop. If a child has a fever or shows symptoms, please do not bring your child to the bus stop. Keep the child at home and consult a doctor. Any child in pre-k, must be accompanied by an adult to the bus, signed in, and have their temperature checked prior to entering the bus per DHS guidelines.

Will students still have access to all activities and services? Students, both on and off campus, will continue to enjoy access to all activities and services that the District offers with needed adjustments made to enhance social distancing, when feasible. Activities that typically include larger groups of students may be adjusted to decrease the number of students in any one setting including but not limited to lunches and recess.

What about students who are ill? Parents should not send students to school if they are ill. If students have a temperature of 100.4 or are symptomatic, they will be sent to the school nurse with a mask for evaluation. Parents will then be contacted and asked to pick up their child. Students may return to school if they have been fever free for 48 hours unless healthcare directives require additional time. If parents do not have a Primary Care Provider (PCP) or if they get permission from their PCP, they can access our School-Based Health Clinic, located behind the high school safe room, to get treatment for all their children's health care needs. Screening questions will be asked at the start of the year. If any of the answers change, the family holds the responsibility to notify the school including but not limited to travel outside the state to hot spot locations specifically.

How will the District respond if a student tests positive for COVID-19? If students come to school with COVID-19 symptoms or have been in contact with a positive COVID-19 patient, school medical staff will ask parents to pick up students with a recommendation for COVID-19 testing. If a student tests positive, the District will follow guidance from the **ADH/DESE**. In addition, the student must be cleared by school nursing staff or other healthcare professionals before returning to school.



REOPENING LONOKE SCHOOLS 20-21

Frequently Asked Questions

Updated July 21, 2020

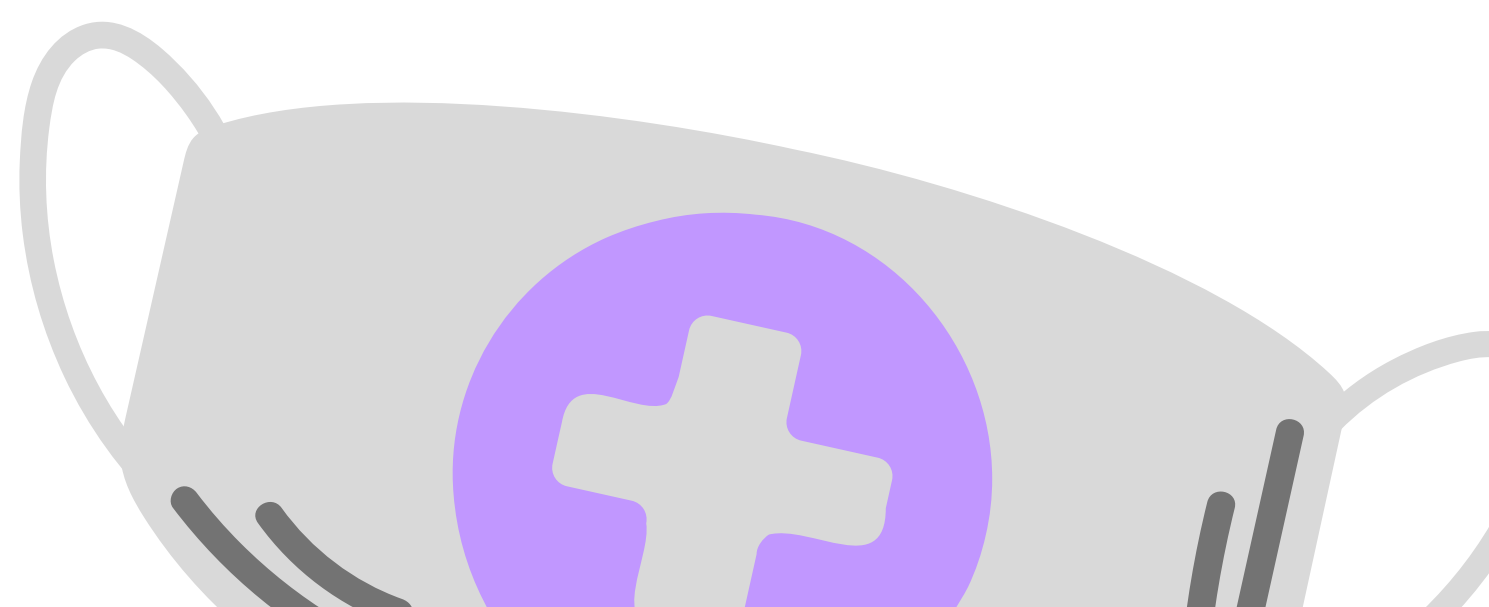
Will we have large group activities/gatherings, including athletic contests?

It is our intent to host and participate in all AAA activities; however, we will follow guidance/directives. The extent to which we have other large group activities will be based on ongoing guidance from the Arkansas Department of Education and the Arkansas Department of Health.

HOW TO SAFELY WEAR A NON-MEDICAL FABRIC MASK

- Thoroughly wash hands with soap and water before touching the mask
- Inspect the mask for any damages or dirt
- Adjust the mask without leaving gaps on the side
- Cover your mouth, nose, and chin
- Avoid touching the mask
- Clean your hands before removing the mask
- Use the straps to remove the mask and pull it away from your face
- Store the mask in the clean reusable plastic bag if it is not dirty or wet, and you plan to re-use it
- Remove the mask from the bag by the straps
- Wash the mask with soap or detergent, preferably with hot water, at least once a day
- Clean your hands after removing the mask

SOURCE: WORLD HEALTH ORGANIZATION

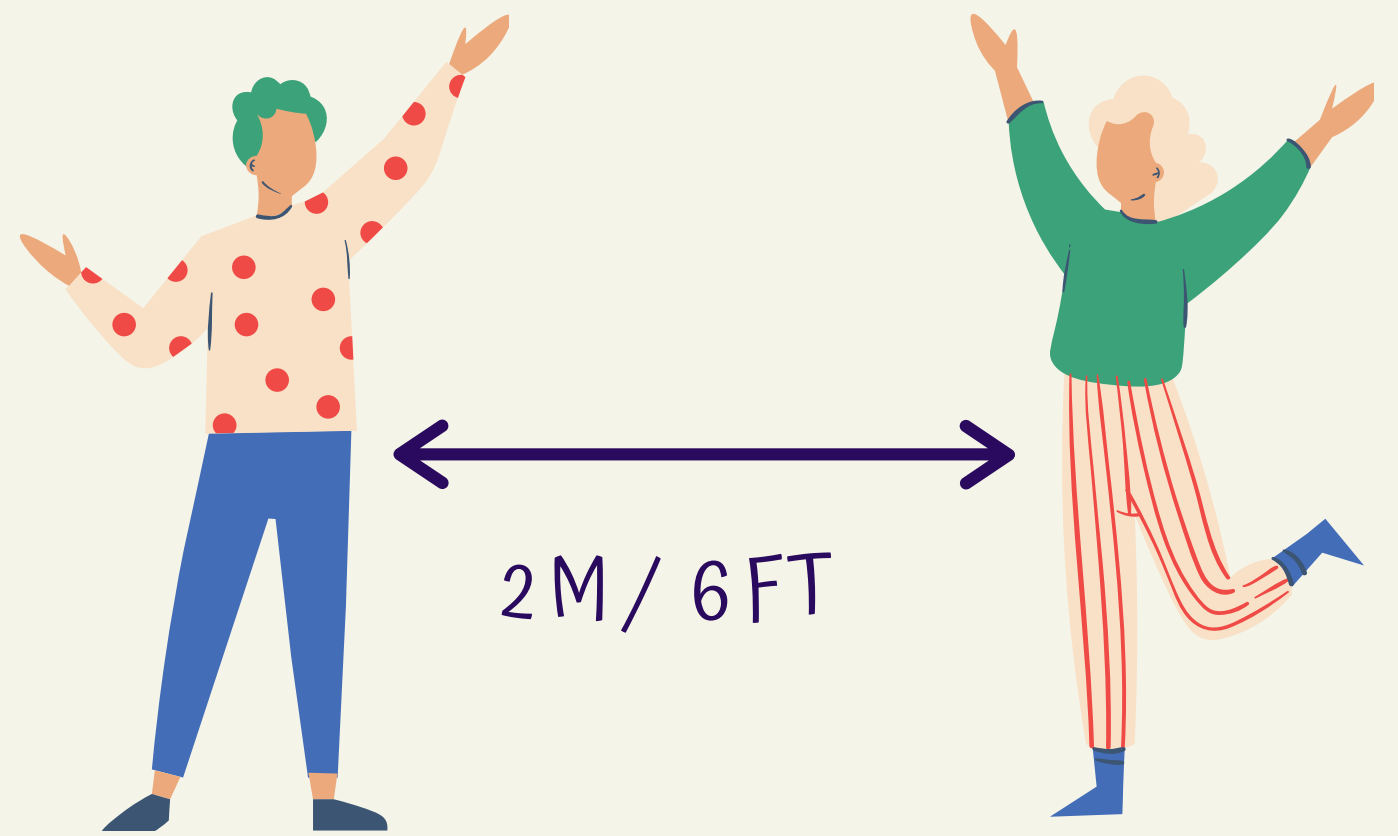


STOP THE SPREAD



WASH YOUR HANDS FREQUENTLY

Regularly and thoroughly clean your hands with an alcohol-based hand rub or wash them with soap and water.



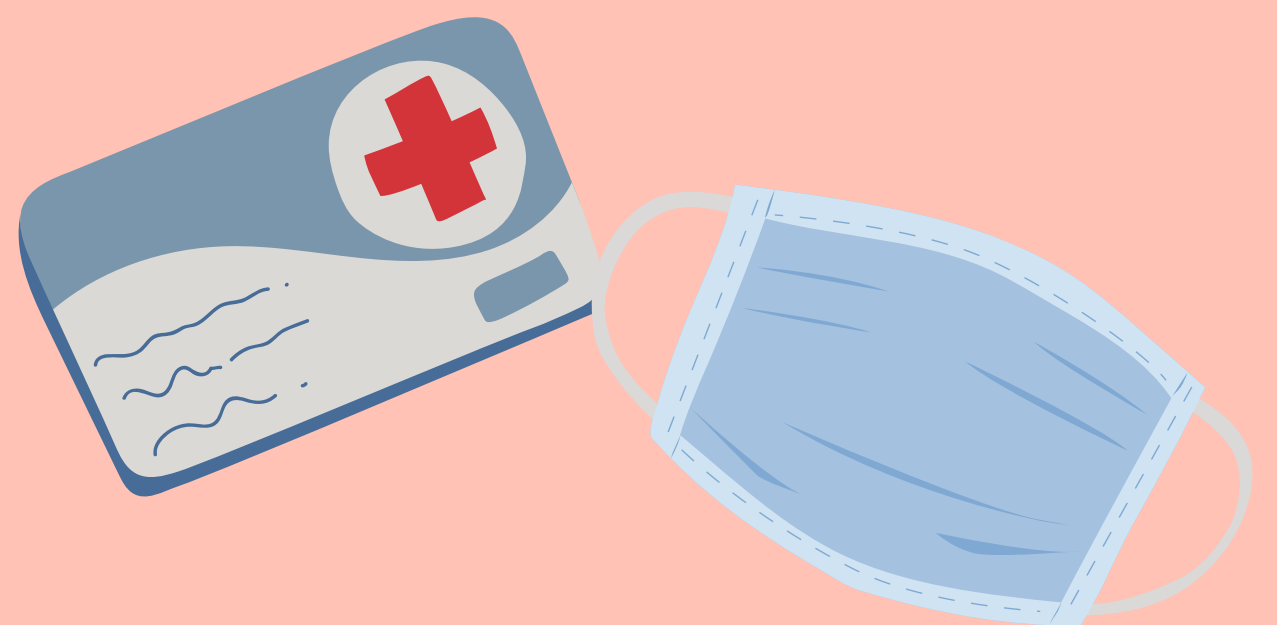
MAINTAIN PHYSICAL DISTANCING

Maintain at least 2 meters (6 feet) distance between yourself and anyone who is coughing or sneezing.



AVOID TOUCHING EYES, NOSE AND MOUTH

Hands touch many surfaces and can pick up viruses. Once contaminated, hands can transfer the virus to your eyes, nose or mouth.



IF YOU HAVE A FEVER, COUGH AND DIFFICULTY BREATHING, SEEK MEDICAL CARE EARLY

Stay home if you feel unwell. If you have a fever, cough and difficulty breathing, seek medical attention and call in advance.